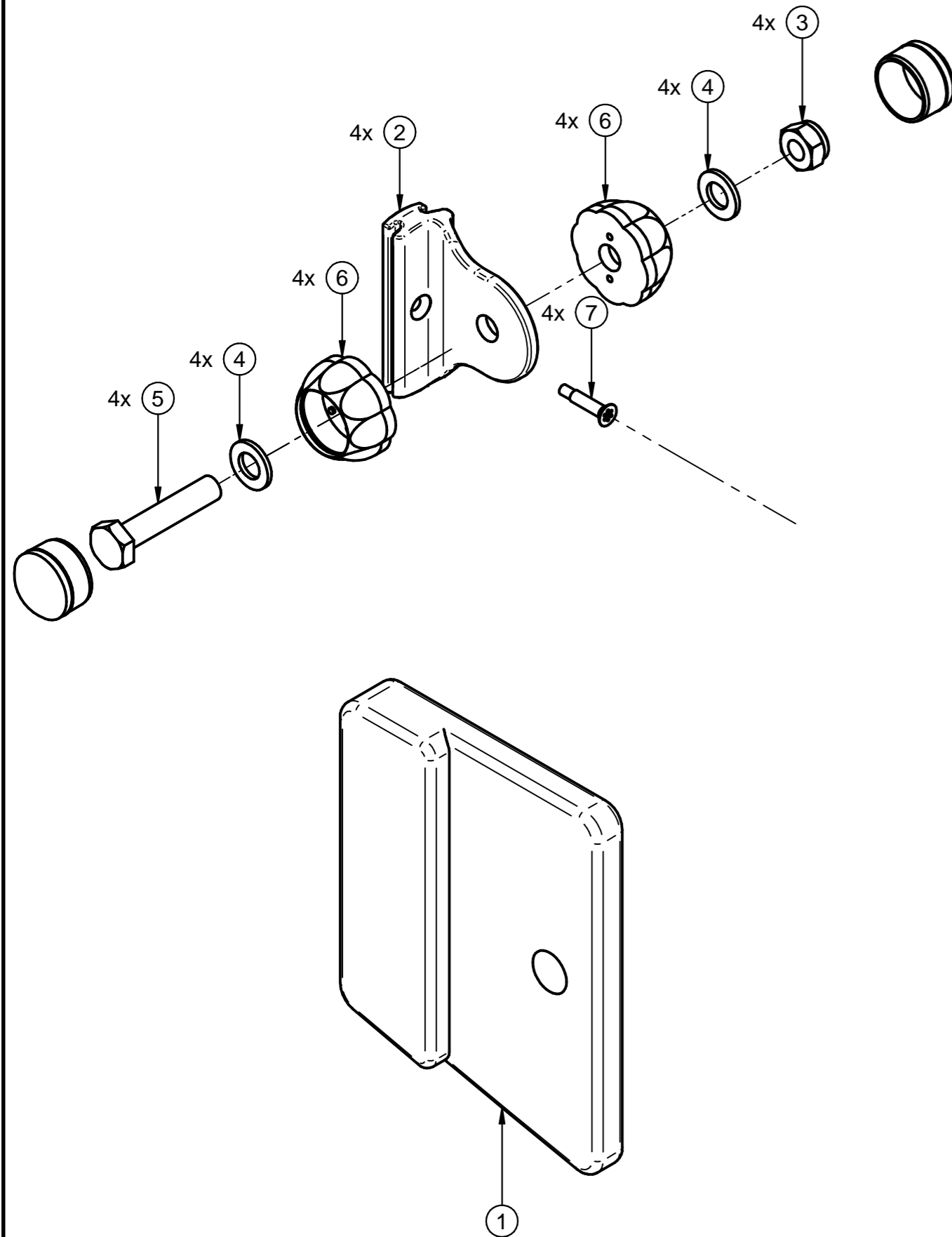


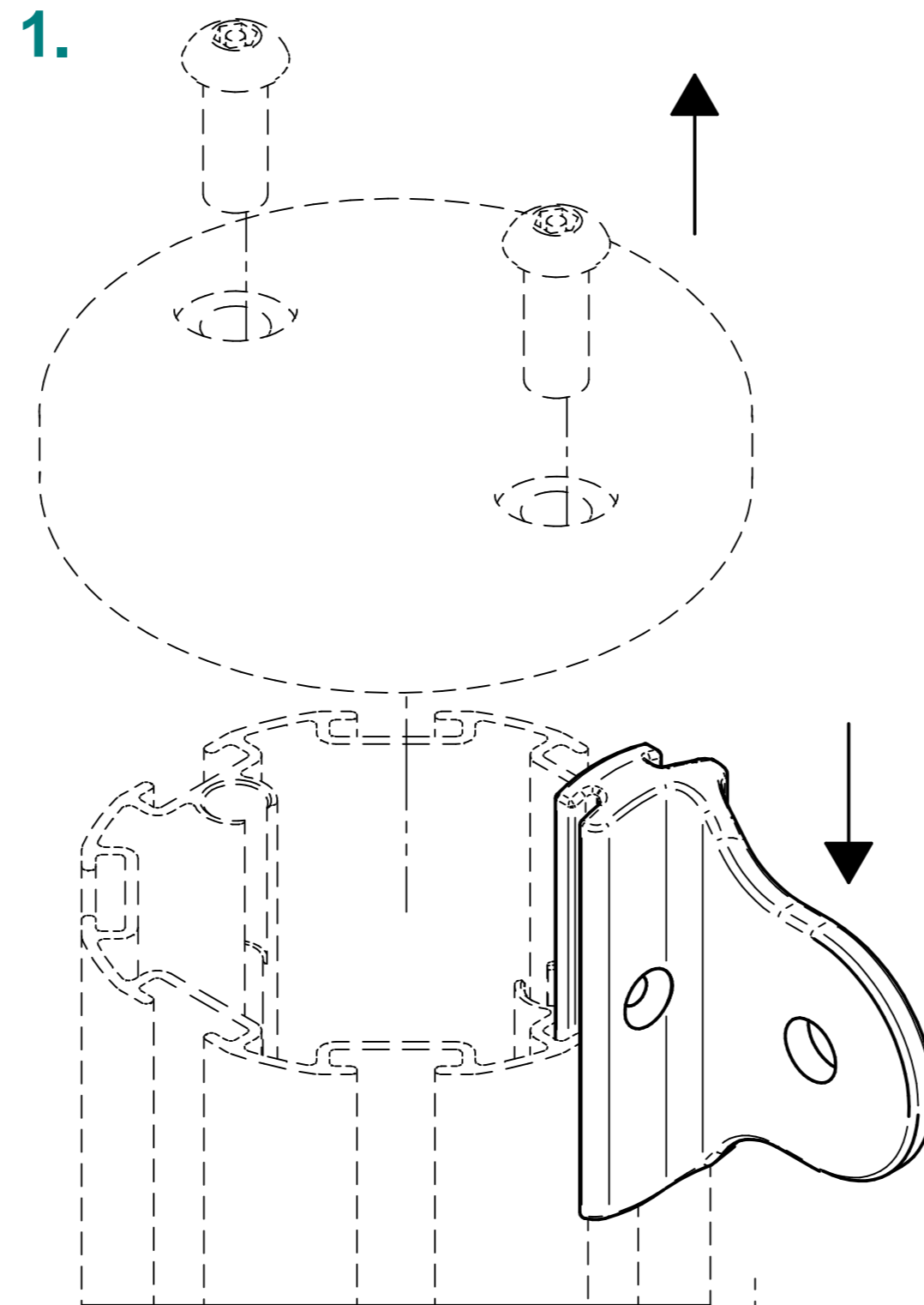
Installation Instructions

FIALBRKT4 - Panel Bracket Set for Alu Posts (REV C)

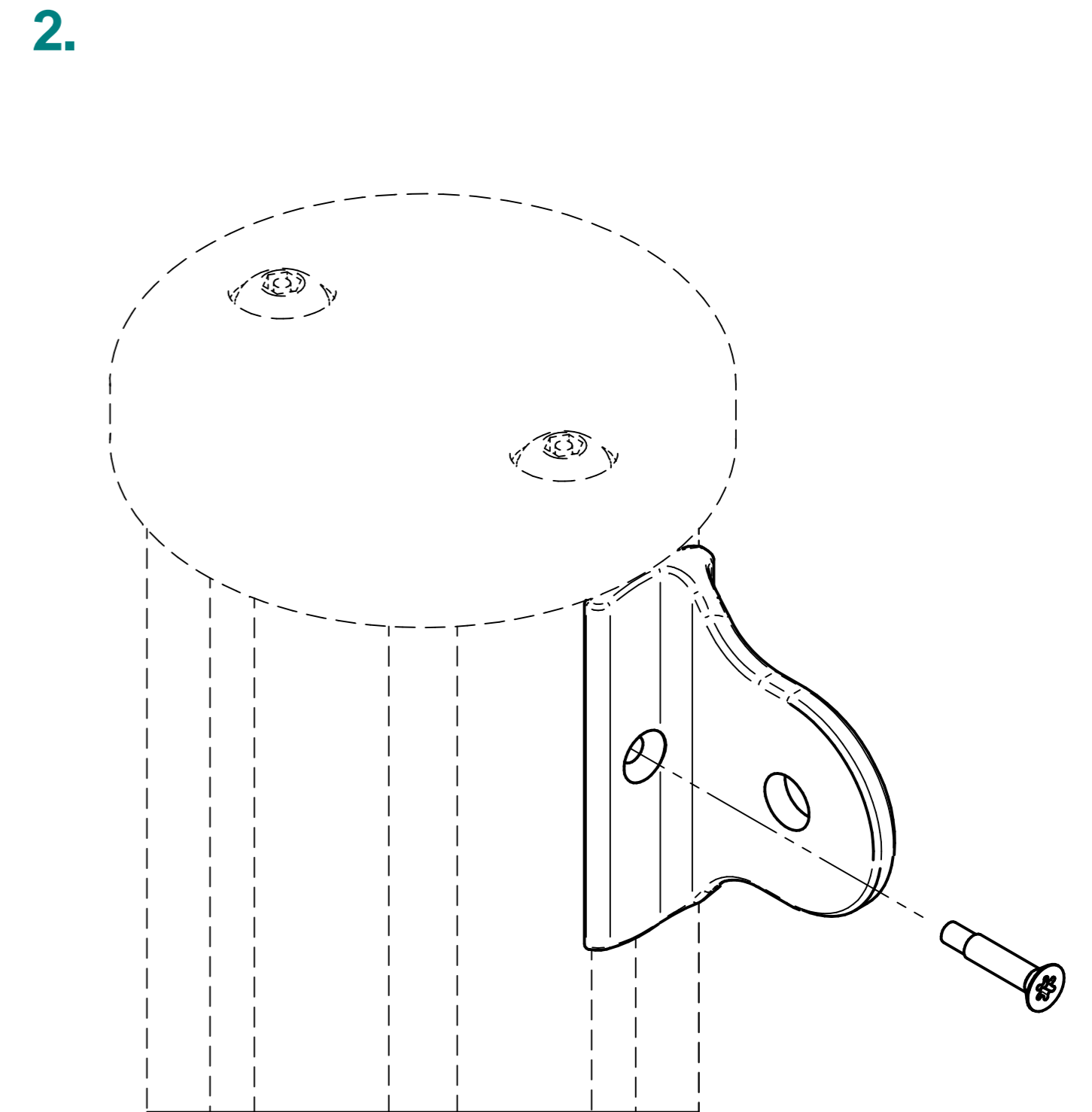
Parts List



Locate Brackets



i Slide the brackets into the desired post slot from the bottom, or remove cap and slide down from above.



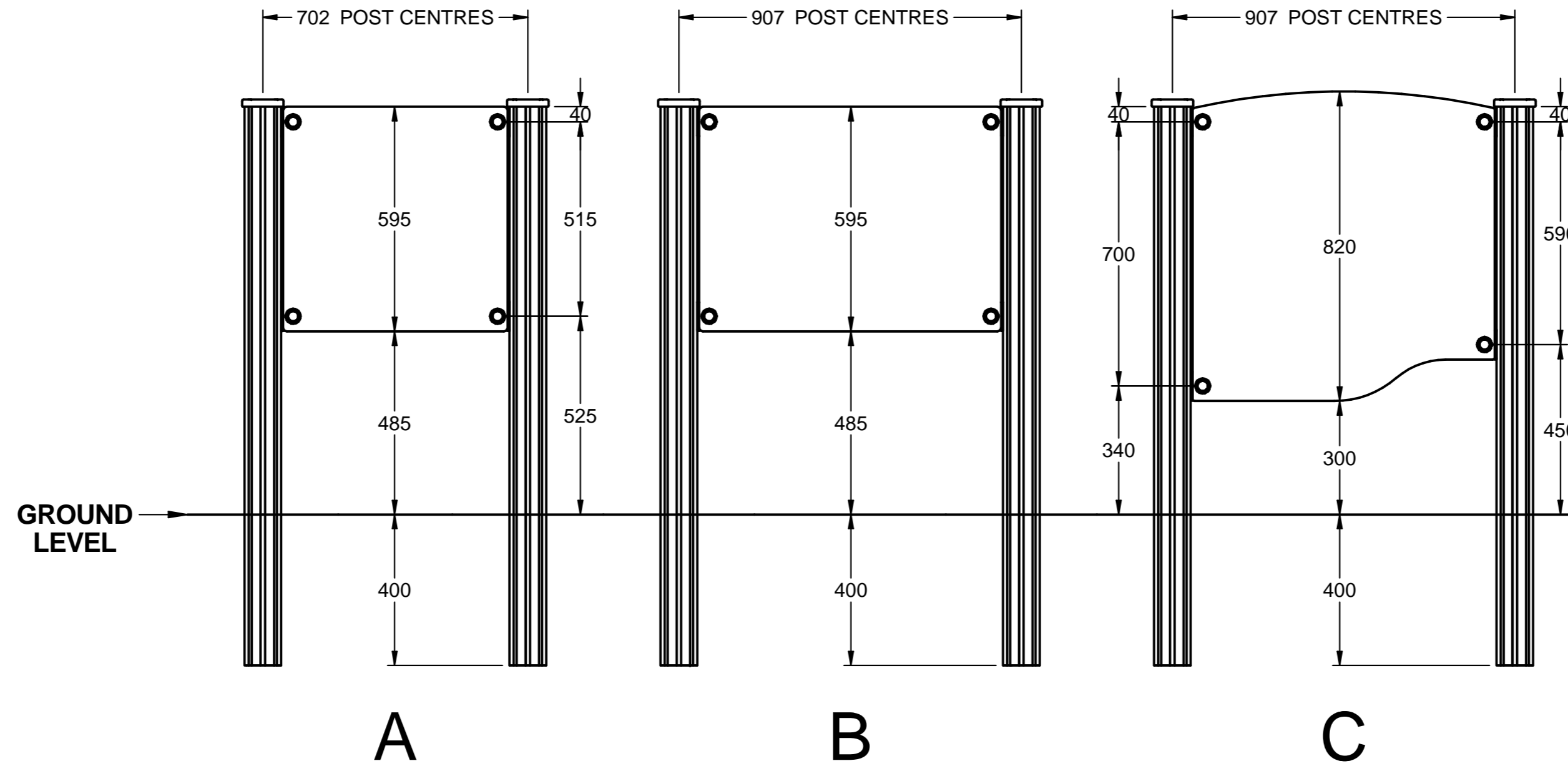
i Top brackets should sit tight, where possible, to the underside of the post caps. Secure brackets to post with the self tapping screws. For the bracket positions refer to the panel guide on sheets 2 and 3.

Item	Code	Description	Qty
1	FJG0076-C	Fixing Hole Jig for Alu Post Panel Bracket	1
2	FPS0750-B	Alu Slot Bracket	4
3	FSU0009-A	M10 Nylock Nut - ZP	4
4	FSU0014-A	M10 Washer - ZP	8
5	FSU0035-A	M10 x 50mm Hex Head Bolt - ZP	4
6	FSU0100-A	M10 Two Piece Security Cap - Flower 8	8
7	FSU1347-A	10G x 1" (4.8 x 25mm) CSK Self Tapping Screw - Torx - SS	4
8	FXS0012-A	T25 Torx Security Driver Bit	1

! PANELS AND POSTS SUPPLIED SEPARATELY

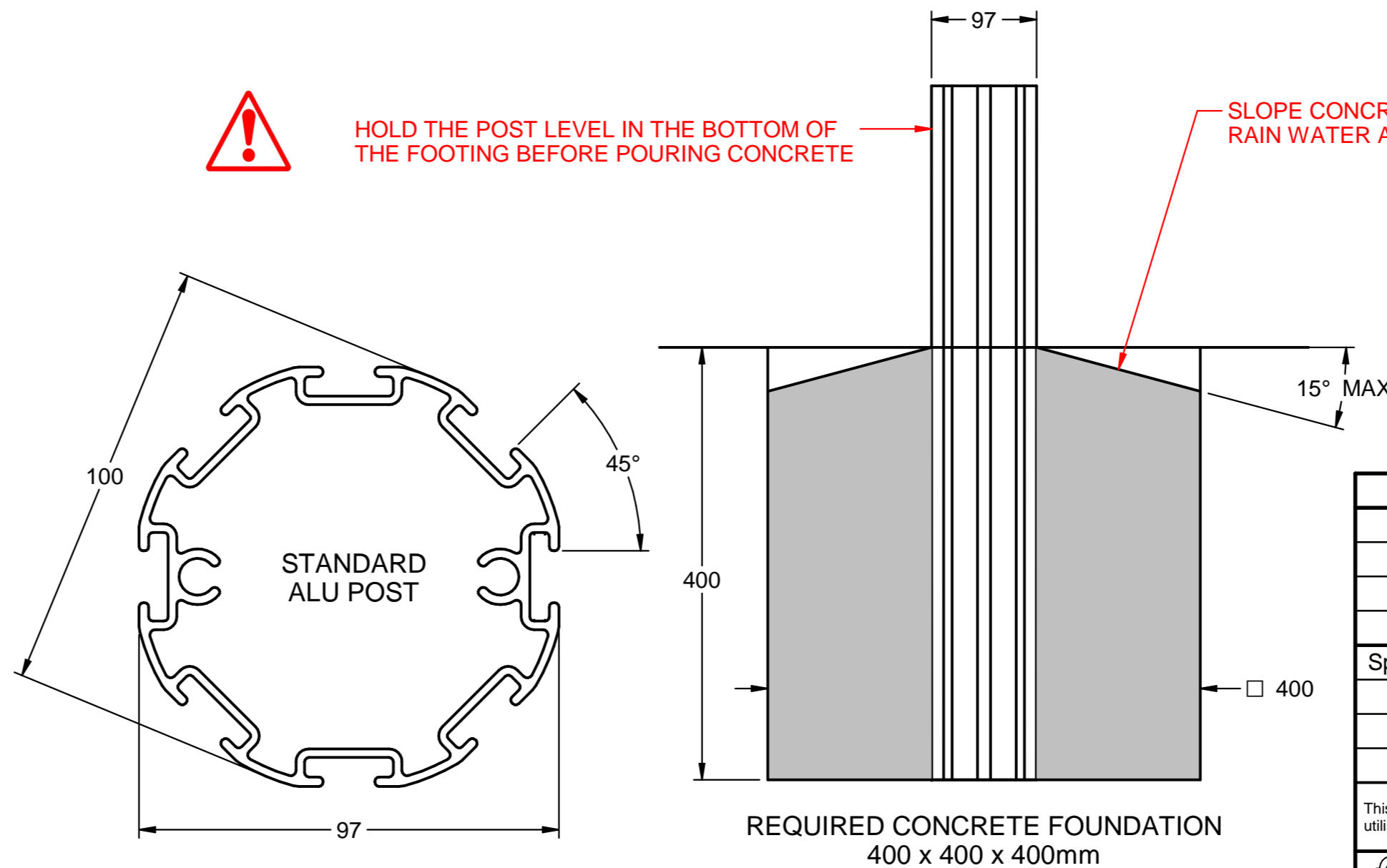
Modification	Date	Approved
New Drawing	19/11/24	AW
Fixings Updated	03/12/24	JMW
Spitfire Road, Old Sarum, Salisbury Wiltshire, SP4 6GB, UK Tel: +44 (0)1722 349 793 www.fahr-industries.com		
This document, including the copyright therein, is the property of Fahr Industries Ltd and may not be utilised for any purpose or reproduced, or transmitted to any third party without prior written consent.		
All Dimensions in mm	1 of 5	Not To Scale
Drg By	Andrew Whittles	

Standard Alu Post and Panel Options



HOLD THE POST LEVEL IN THE BOTTOM OF THE FOOTING BEFORE POURING CONCRETE

SLOPE CONCRETE SURFACE TO DIRECT RAIN WATER AWAY FROM POST



Panel	Size (W x H)	Post Required
A	595 x 595mm	FIAP1500 - Alu Extruded Post with Top Cap - 1500mm Long
B	800 x 595mm	FIAP1500 - Alu Extruded Post with Top Cap - 1500mm Long
C	800 x 820mm	FIAP1500 - Alu Extruded Post with Top Cap - 1500mm Long

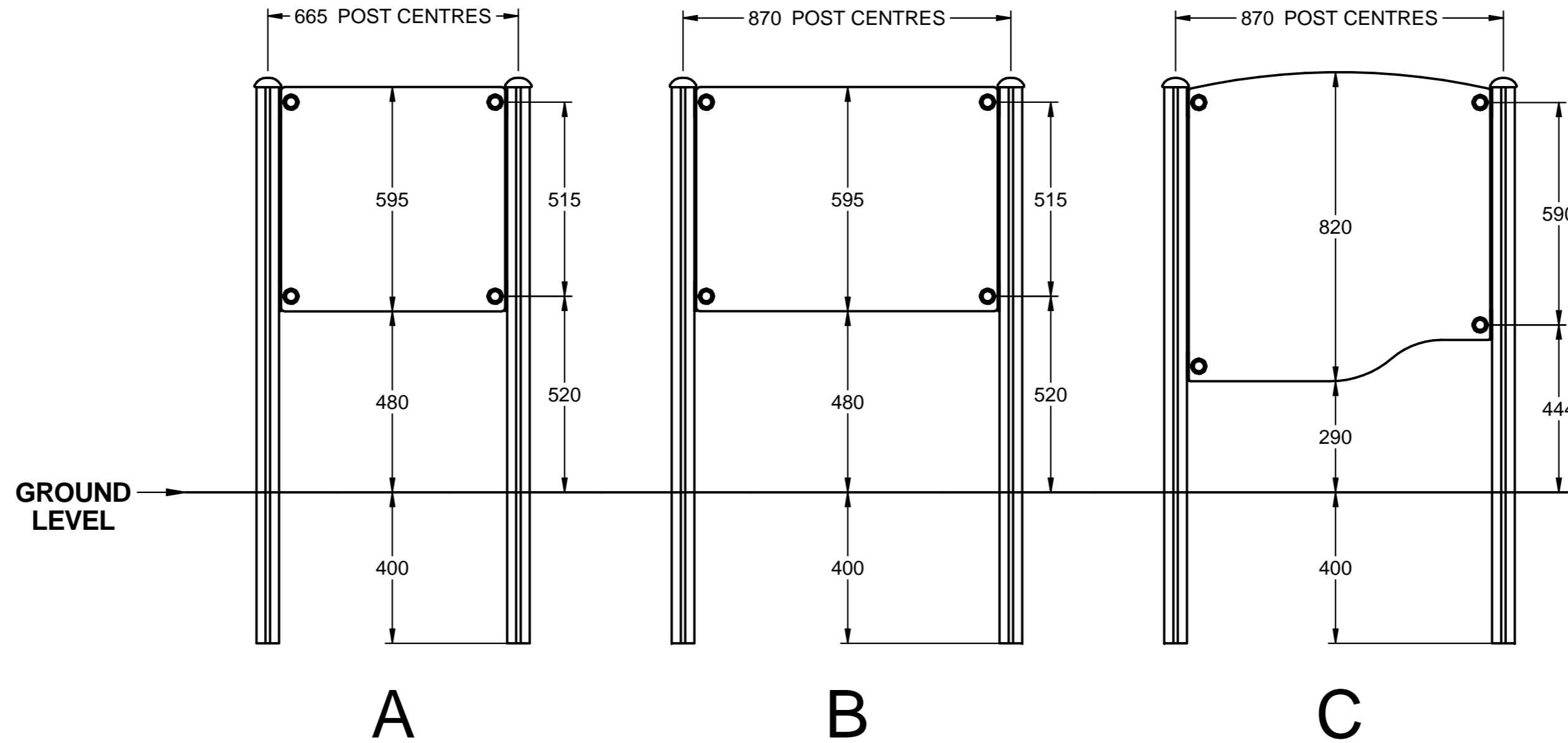
Item	Code	Description	Qty
1	FJG0076-C	Fixing Hole Jig for Alu Post Panel Bracket	1
2	FPS0750-B	Alu Slot Bracket	4
3	FSU0009-A	M10 Nylock Nut - ZP	4
4	FSU0014-A	M10 Washer - ZP	8
5	FSU0035-A	M10 x 50mm Hex Head Bolt - ZP	4
6	FSU0100-A	M10 Two Piece Security Cap - Flower 8	8
7	FSU1347-A	10G x 1" (4.8 x 25mm) CSK Self Tapping Screw - Torx - SS	4
8	FXS0012-A	T25 Torx Security Driver Bit	1

Modification	Date	Approved
New Drawing	19/11/24	AW
Fixings Updated	03/12/24	JMW

Spitfire Road, Old Sarum, Salisbury Wiltshire, SP4 6GB, UK Tel: +44 (0)1722 349 793 www.fahr-industries.com	
--	--

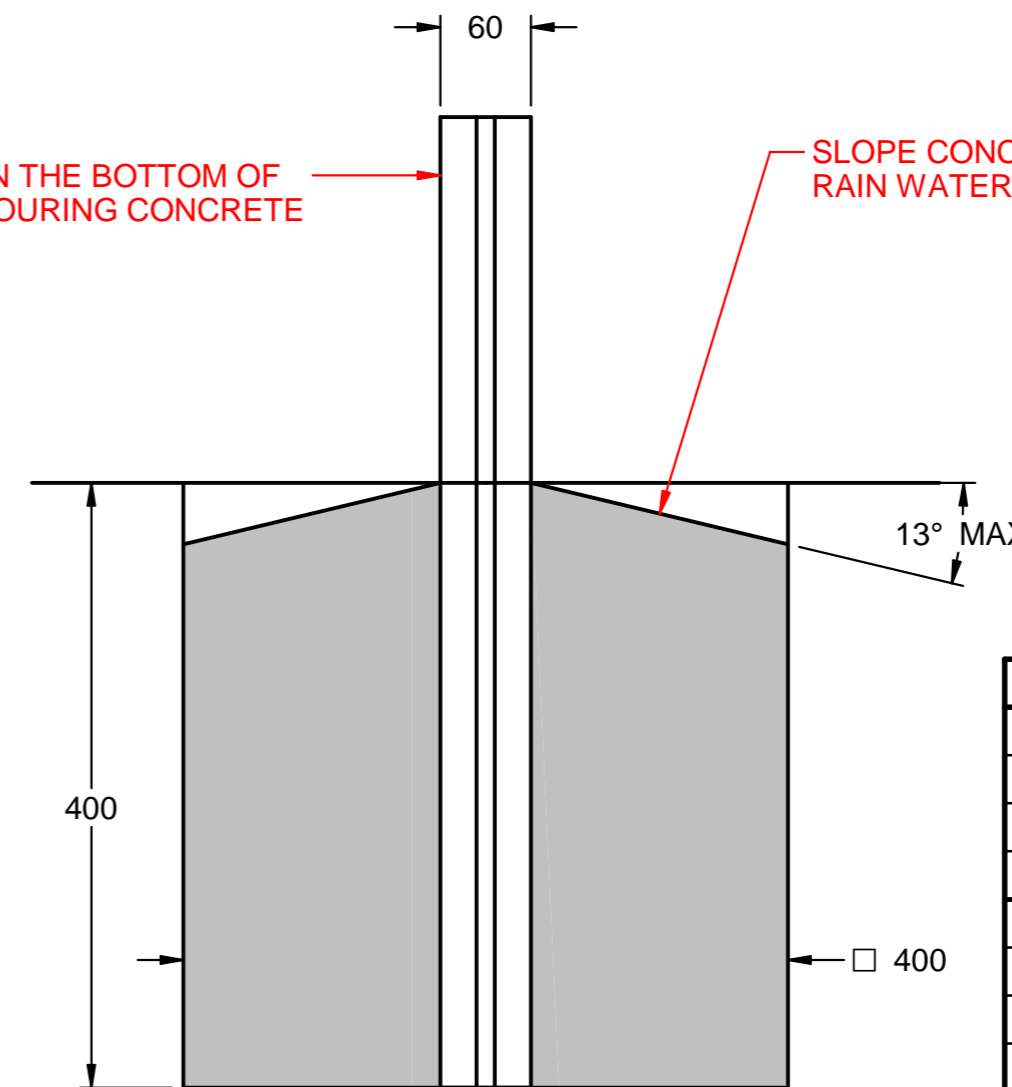
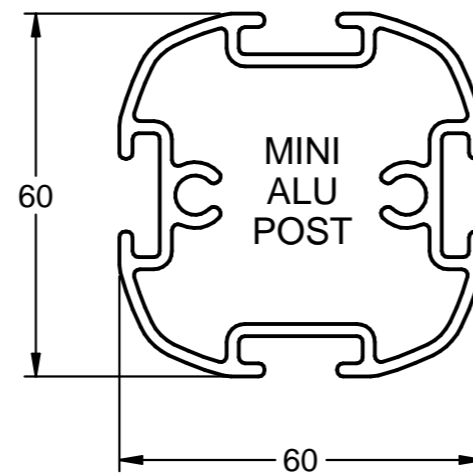
This document, including the copyright therein, is the property of Fahr Industries Ltd and may not be utilised for any purpose or reproduced, or transmitted to any third party without prior written consent.			
	All Dimensions in mm	2 of 5	Not To Scale
Drg By	Andrew Whittles		

Mini Alu Post and Panel Options



HOLD THE POST LEVEL IN THE BOTTOM OF THE FOOTING BEFORE POURING CONCRETE

SLOPE CONCRETE SURFACE TO DIRECT RAIN WATER AWAY FROM POST



REQUIRED CONCRETE FOUNDATION
400 x 400 x 400mm

Panel	Size (W x H)	Post Required
A	595 x 595mm	FIMAP1500 - Mini Alu Extruded Post with Top Cap - 1500mm Long
B	800 x 595mm	FIMAP1500 - Mini Alu Extruded Post with Top Cap - 1500mm Long
C	800 x 820mm	FIMAP1500 - Mini Alu Extruded Post with Top Cap - 1500mm Long

Item	Code	Description	Qty
1	FJG0076-C	Fixing Hole Jig for Alu Post Panel Bracket	1
2	FPS0750-B	Alu Slot Bracket	4
3	FSU0009-A	M10 Nylock Nut - ZP	4
4	FSU0014-A	M10 Washer - ZP	8
5	FSU0035-A	M10 x 50mm Hex Head Bolt - ZP	4
6	FSU0100-A	M10 Two Piece Security Cap - Flower 8	8
7	FSU1347-A	10G x 1" (4.8 x 25mm) CSK Self Tapping Screw - Torx - SS	4
8	FXS0012-A	T25 Torx Security Driver Bit	1

Modification	Date	Approved
New Drawing	19/11/24	AW
Fixings Updated	03/12/24	JMW

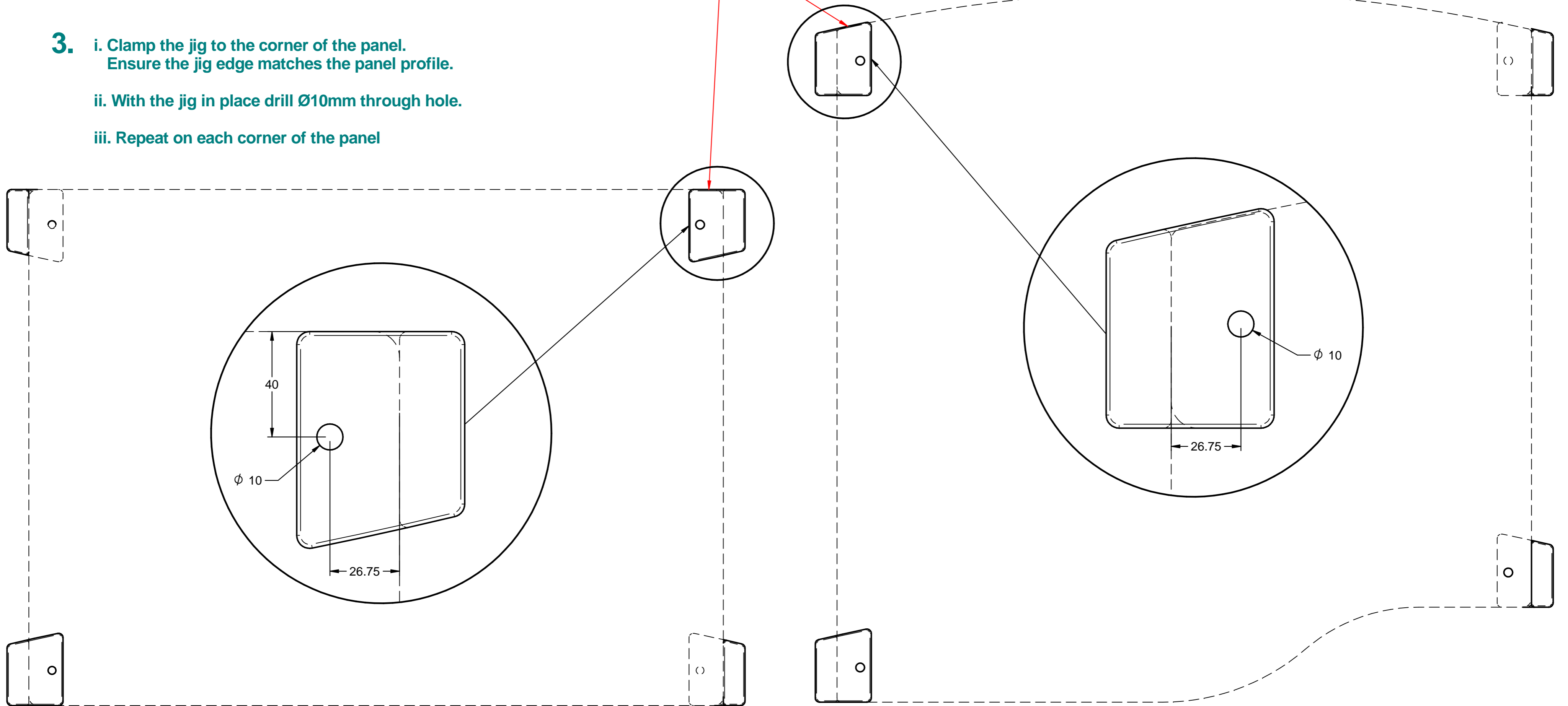
Spitfire Road, Old Sarum, Salisbury
Wiltshire, SP4 6GB, UK
Tel: +44 (0)1722 349 793
www.fahr-industries.com

Panel Drilling



Ensure the JIG is flipped to match the profile of each panel

3. i. Clamp the jig to the corner of the panel.
Ensure the jig edge matches the panel profile.
- ii. With the jig in place drill $\varnothing 10$ mm through hole.
- iii. Repeat on each corner of the panel

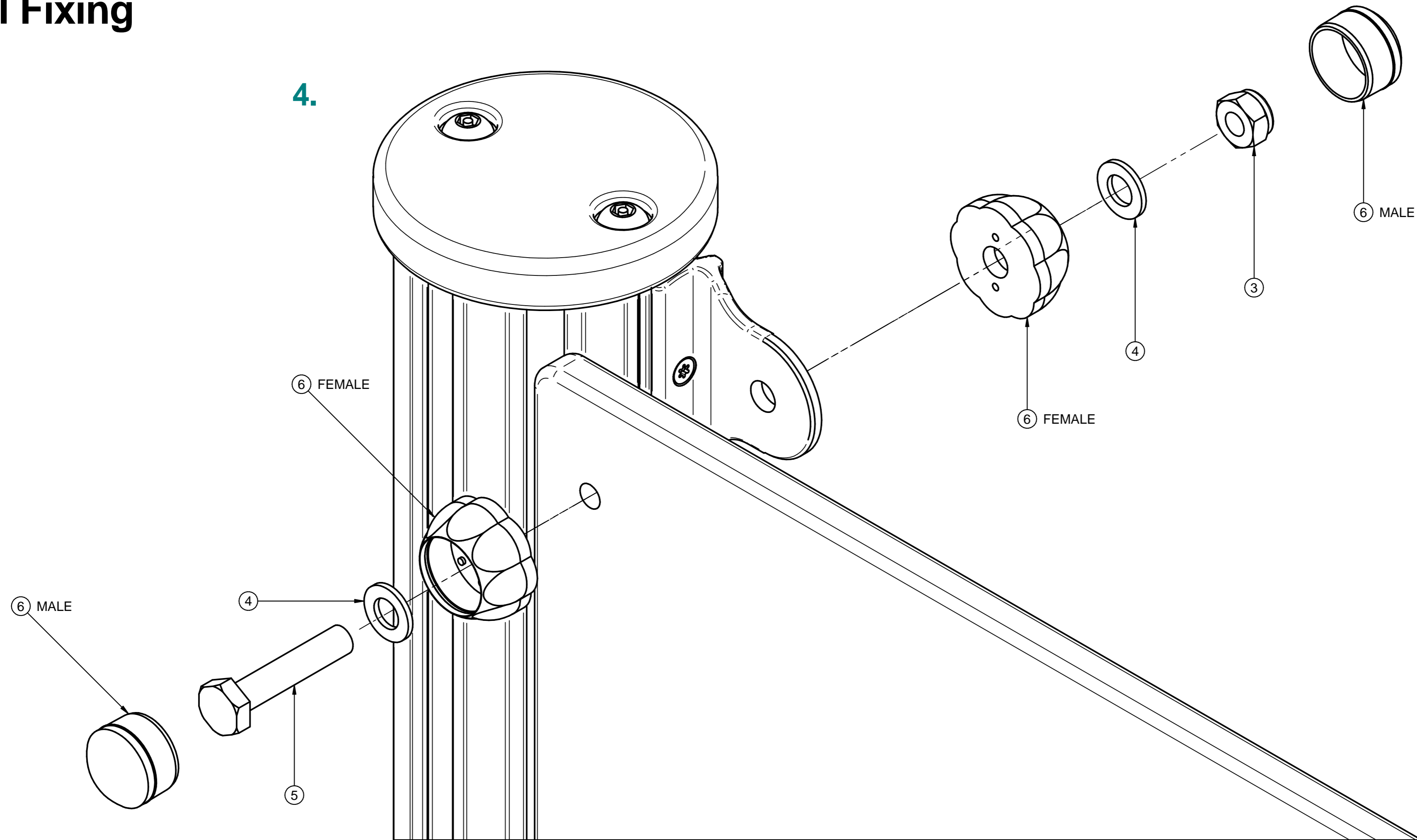


Item	Code	Description	Qty
1	FJG0076-C	Fixing Hole Jig for Alu Post Panel Bracket	1
2	FPS0750-B	Alu Slot Bracket	4
3	FSU0009-A	M10 Nylock Nut - ZP	4
4	FSU0014-A	M10 Washer - ZP	8
5	FSU0035-A	M10 x 50mm Hex Head Bolt - ZP	4
6	FSU0100-A	M10 Two Piece Security Cap - Flower 8	8
7	FSU1347-A	10G x 1" (4.8 x 25mm) CSK Self Tapping Screw - Torx - SS	4
8	FXS0012-A	T25 Torx Security Driver Bit	1

Modification	Date	Approved
New Drawing	19/11/24	AW
Fixings Updated	03/12/24	JMW

Spitfire Road, Old Sarum, Salisbury			
Wiltshire, SP4 6GB, UK			
Tel: +44 (0)1722 349 793			
www.fahr-industries.com			
<small>This document, including the copyright therein, is the property of Fahr Industries Ltd and may not be utilised for any purpose or reproduced, or transmitted to any third party without prior written consent.</small>			
	All Dimensions in mm	4 of 5	Not To Scale
Drg By	Andrew Whittles		

Panel Fixing



i Secure the play panel to the brackets using the fixings shown.

Item	Code	Description	Qty
1	FJG0076-C	Fixing Hole Jig for Alu Post Panel Bracket	1
2	FPS0750-B	Alu Slot Bracket	4
3	FSU0009-A	M10 Nylock Nut - ZP	4
4	FSU0014-A	M10 Washer - ZP	8
5	FSU0035-A	M10 x 50mm Hex Head Bolt - ZP	4
6	FSU0100-A	M10 Two Piece Security Cap - Flower 8	8
7	FSU1347-A	10G x 1" (4.8 x 25mm) CSK Self Tapping Screw - Torx - SS	4
8	FXS0012-A	T25 Torx Security Driver Bit	1

Modification	Date	Approved
New Drawing	19/11/24	AW
Fixings Updated	03/12/24	JMW
Spitfire Road, Old Sarum, Salisbury Wiltshire, SP4 6GB, UK Tel: +44 (0)1722 349 793 www.fahr-industries.com		
<small>This document, including the copyright therein, is the property of Fahr Industries Ltd and may not be utilised for any purpose or reproduced, or transmitted to any third party without prior written consent.</small>		
	All Dimensions in mm	5 of 5
Drg By	Andrew Whittles	Not To Scale